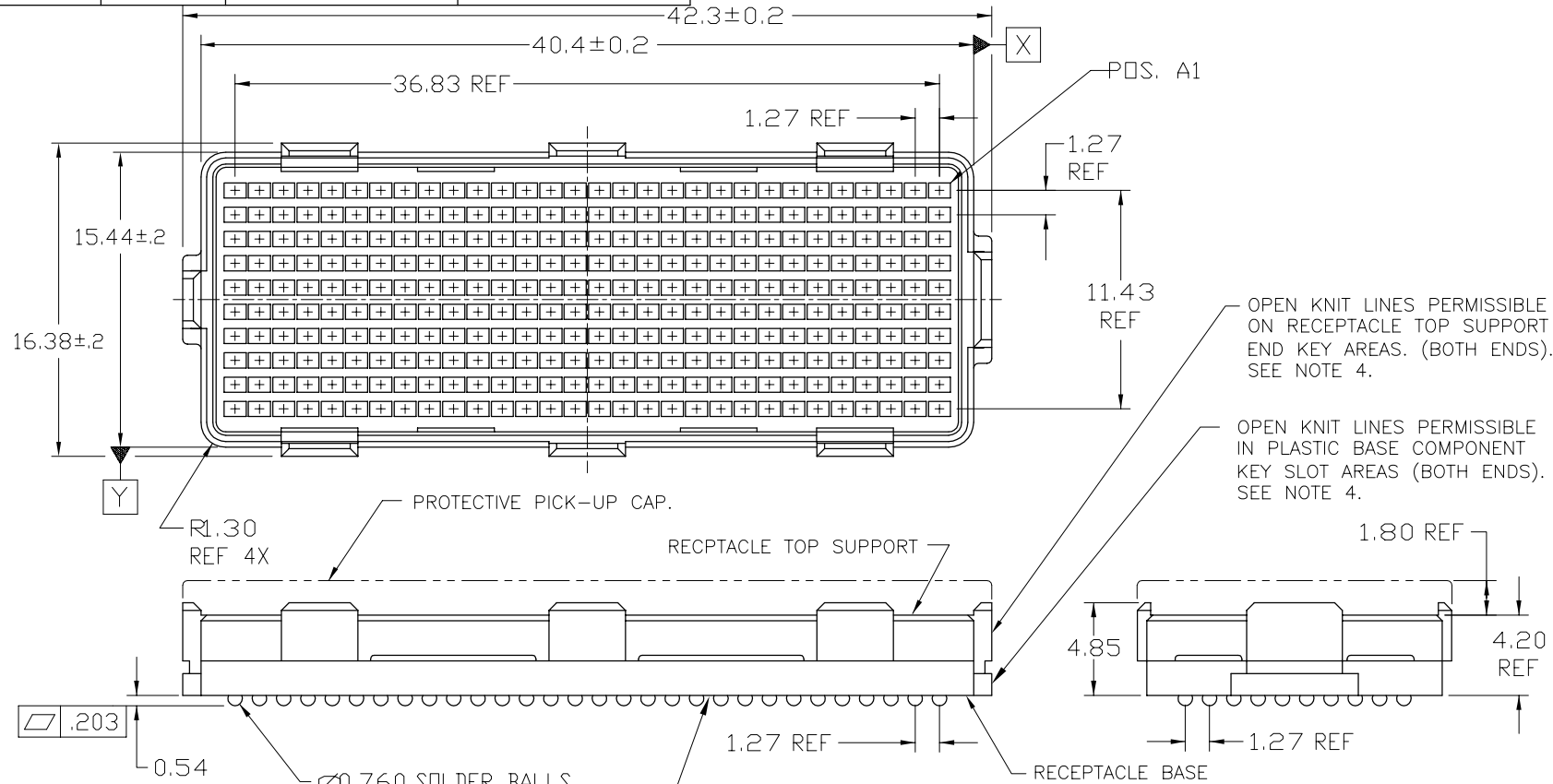


PRODUCT NUMBER	PICK-UP CAP	CONTACT PLATING	SOLDER BALL
84502-001	YES	15u" (.38um) Au OVER Ni	SnPb
84502-001LF			SnAgCu LEAD FREE ⑤⑥
84502-101	YES	30u" (.76um) Au OVER Ni	SnPb
84502-101LF			SnAgCu LEAD FREE ⑤⑥
84502-201	YES	SEE NOTE ⑦ & ⑧	SnPb
84502-201LF			SnAgCu LEAD FREE ⑤⑥



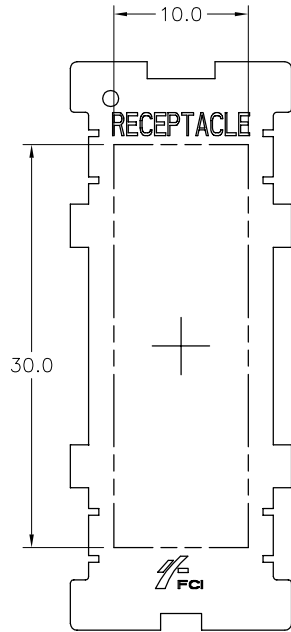
OPEN KNOT LINES PERMISSIBLE ON RECEPTACLE TOP SUPPORT END KEY AREAS. (BOTH ENDS). SEE NOTE 4.

OPEN KNOT LINES PERMISSIBLE IN PLASTIC BASE COMPONENT KEY SLOT AREAS (BOTH ENDS). SEE NOTE 4.

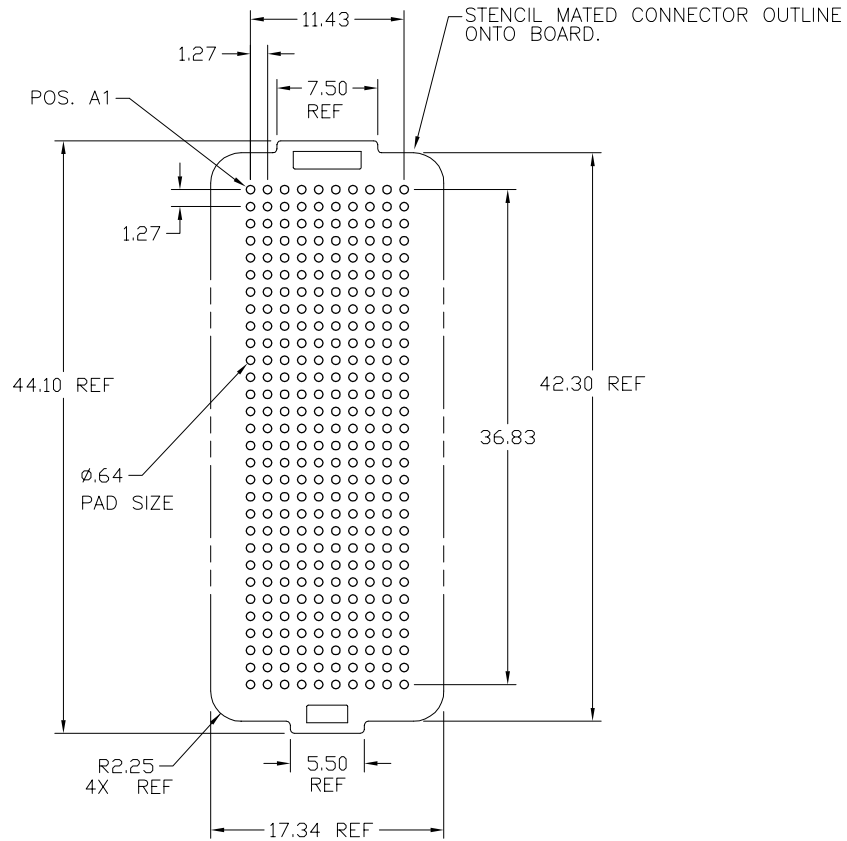
CONTINUOUS OPEN KNOT LINE CRACKS (TRAVERSING THE ENTIRE BODY LENGTH OF THE CONNECTOR) WHICH CAUSE CRITICAL-TO-FUNCTION DIMENSIONAL CHANGES THAT AFFECT THE CONNECTORS MECHANICAL ALIGNMENT FEATURES ARE NOT PERMISSIBLE. SEE NOTE 4.

mat'l. code	SEE NOTE 1.	surface	ASME Y14.5 ✓	tolerance	ASME Y14.5	projection	product family
litr	ec'n no	dr	date	tolerances unless otherwise specified		MM	MEG-ARRAY
H	V06-0560	LP	2006/07/13	angles	X+3	scale 3:1	title 5.5mm RECPT. ASSY. 10 X 30 = 300 POS.
J	V06-1173	LP	2006/12/11	flat	.XX+13		
-	-	-	-	0° ±2'	XXX+051		
D	V00181	HLJ	08.16.00	dr	D.WAUGHEN	2.23.99	dwg no
E	V20692	DRW	4.2.02	engr	D.HARPER	2.23.99	sheet 1 of 4
F	V03-0680	DAI	6.19.03	chr	D.HARPER	2.23.99	size
G	V04-0940	VS	10/18/04	appd	D.HARPER	2.23.99	A4
sheet index	revision sheet	J	J	J	J		type
		1	2	3	4		CUSTOMER Drawing



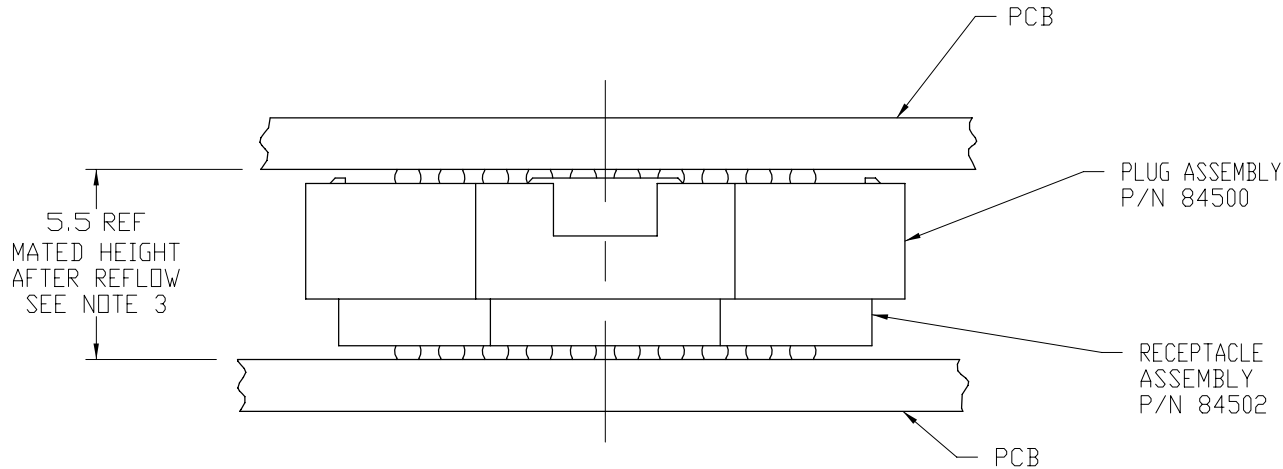


FLAT AREA FOR PICK UP CAP



BOARD PATTERN

mat'l. code SEE NOTE 1.		surface ASME Y14.5 ✓		tolerance ASME Y14.5		projection ⊕		product family MEG-ARRAY		
ltr	ecn no	dr	date	tolerances unless otherwise specified		MM ← →		title 5.5mm RECPT. ASSY. 10 X 30 = 300 POS.		
J				angles	line fit	scale 2:1		dwg no 84502		
				0° ±2'	XXX+051	FCJ		sheet 2 of 4 size A4		
				dr	D.WAUGHEN	2.23.99			type CUSTOMER Drawing	
				enr	D.HARPER	2.23.99				
				chr	D.HARPER	2.23.99				
				appd	D.HARPER	2.23.99				
sheet index	revision sheet									



MATED HEIGHT AFTER REFLOW IS BASED ON ϕ .64mm PAD (METAL-DEFINED) AND .13mm SOLDER PASTE STENCIL THICKNESS. SEE NOTE 3.
END VIEW - MATED CONNECTORS

NOTES:

1. MAT'L

HOUSING: LCP
CONTACT: COPPER ALLOY

PLATING

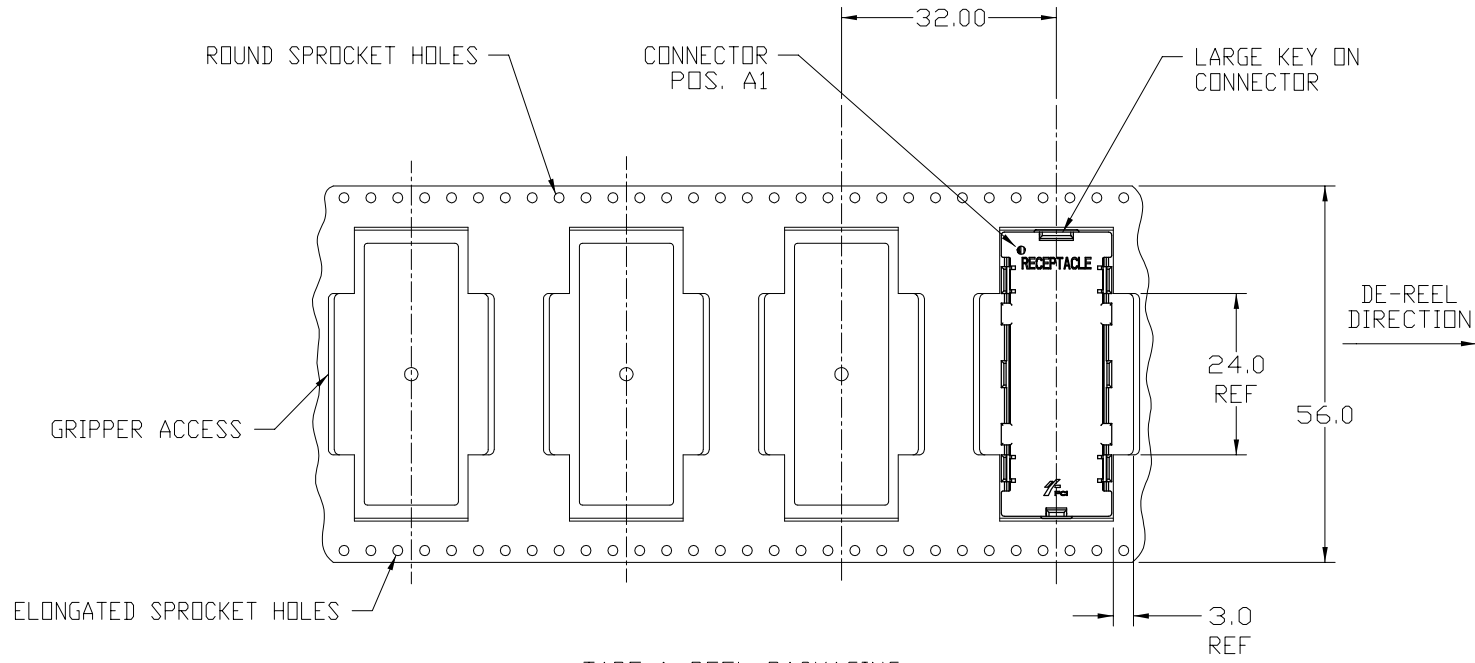
CONTACT: (SEE TABLE ON SHEET1)
SOLDER BALL: (SEE TABLE ON SHEET1)
EUTECTIC SnPb OR LEAD FREE
95.5Sn/4Ag/0.5Cu

- 2. SOLDER BALLS WILL NOT BE PERFECT SPHERICAL SHAPE DUE TO REFLOW ATTACHMENT.
- 3. MATED HEIGHT EFFECTED BY CUSTOMER'S PCB PAD SIZE, PLATING, SOLDER REFLOW PROFILE, & SOLDER PASTE.
- 4. KNIT LINE: SLIGHT VISIBLE MARKS (USUALLY A LINE) INDICATING THE DIRECTION AND MEETING POINT OF PLASTIC RESIN FLOW FRONTS TRAVELING AROUND ANY OBSTRUCTIONS TO THE RESIN FLOW VIA THE REQUIRED MOLD TOOLING.

- 5. FOR PROPER APPLICATION FOLLOW FCI APPLICATION SPECIFICATION GS-20-033 LEAD FREE SOLDER BALLS WILL NOT SOLDER PROPERLY IN A LEADED SOLDER PROCESS DUE TO A HIGHER REFLOW TEMPERATURE. LEAD FREE PRODUCT IS THEREFORE NOT BACKWARDS COMPATIBLE WITH LEADED OR SOME SOLDERING APPLICATIONS. REFERENCE FCI APPLICATION SPECIFICATION

- 6. THIS PRODUCT MEETS EUROPEAN UNION DIRECTIVES AND OTHER COUNTRY REGULATIONS AS DESCRIBED IN GS-22-008 PRODUCT MEETING THIS DIRECTIVE IS IDENTIFIED IN THE LOT CODE NUMBER MARKED ON EACH PART BY HAVING AN "X" IN THE SEVENTH CHARACTER POSITION
- 7. PLATING FOR INDICATED -2XX SERIES PART NOS. MEETS THE REQUIREMENTS OF NORTEL NPS25298-2 (CENTRAL OFFICE ENVIRONMENT, 25 YEAR LIFE EXPECTANCY).
- 8. PLATING FOR INDICATED -2XX SERIES PART NOS. IS Au OVER Ni WITH SPECIAL CONTACT GEOMETRY TO MEET REQUIREMENTS OF TELCORDIA GR-1217-CORE: CENTRAL OFFICE ENVIRONMENT.

mat'l. code SEE NOTE 1.		surface ASME Y14.5 <input checked="" type="checkbox"/>	tolerance ASME Y14.5	projection 	product family MEG-ARRAY
ltr	ec'n no	dr	date	tolerances unless otherwise specified	title 5.5mm RECPT. ASSY. 10 X 30 = 300 POS.
J				angles X*3 XX*13	scale 5:1
				0° ±2'	xxx+051
		dr	D.WAUGHEN	2.23.99	
		enr	D.HARPER	2.23.99	
		chr	D.HARPER	2.23.99	
		appd	D.HARPER	2.23.99	
sheet index	revision sheet	1			dwg no 84502 sheet 3 of 4 size A4 type CUSTOMER Drawing



TAPE & REEL PACKAGING
 PER EIA 481-3
 SCALE 1:1

mat'l. code SEE NOTE 1.		surface ASME Y14.5 ✓		tolerance ASME Y14.5		projection 		product family MEG-ARRAY		
ltr	ecr no	dr	date	tolerances unless otherwise specified						
J				angles	X*.3		MM		title 5.5mm RECPT. ASSY. 10 X 30 = 300 POS.	
				0° ±2'	.XX*.13		scale 1:1			
					XXX*.051					
		dr	D.WAUGHEN		3.11.99			dwg no		
		enr	D.HARPER		3.11.99			sheet 4 of 4		size
		chr	D.HARPER		3.11.99			84502		A4
		appd	D.HARPER		3.11.99			type CUSTOMER Drawing		
sheet index	revision sheet	1								